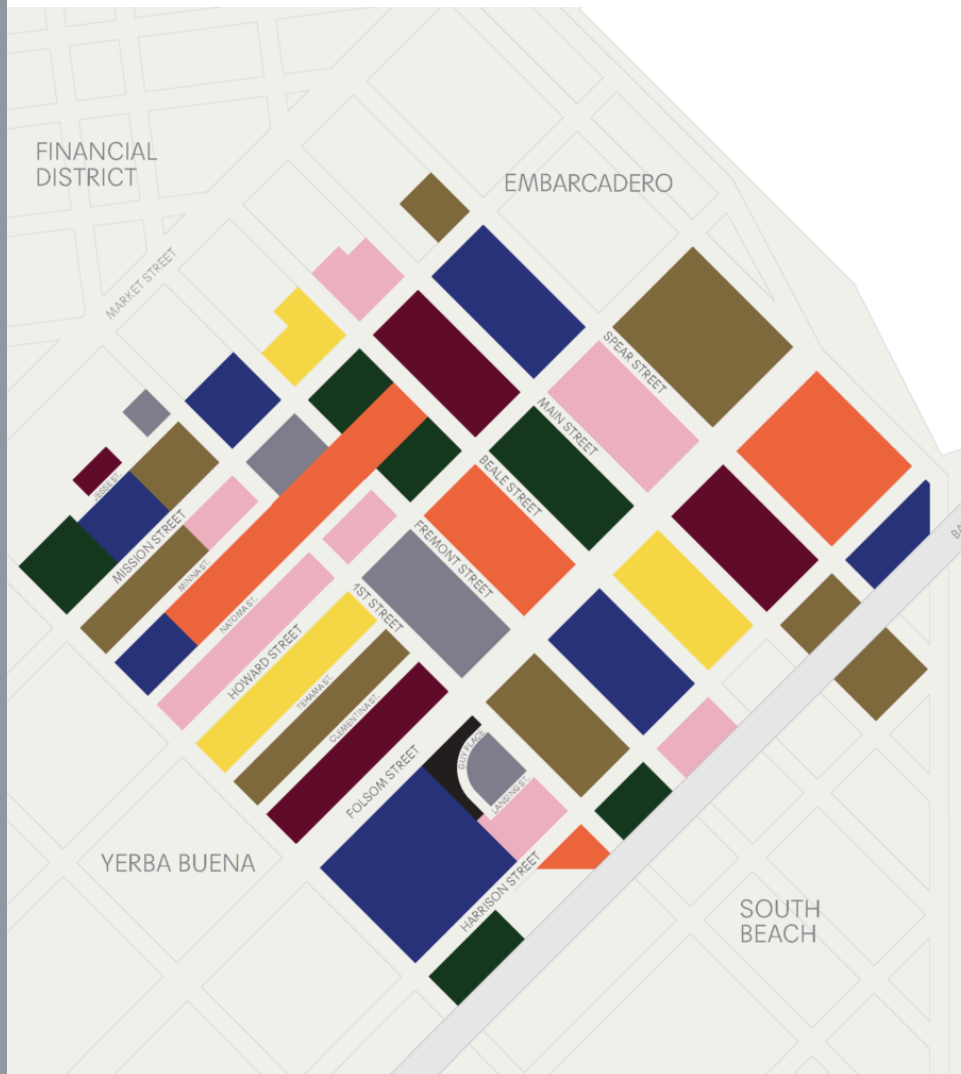


Operations Report

March 2025

Prepared by: Block by Block
for The East Cut Community Benefit District



Highlights



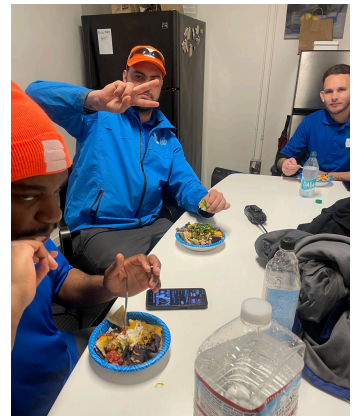
Trash

9,000
lbs. of trash



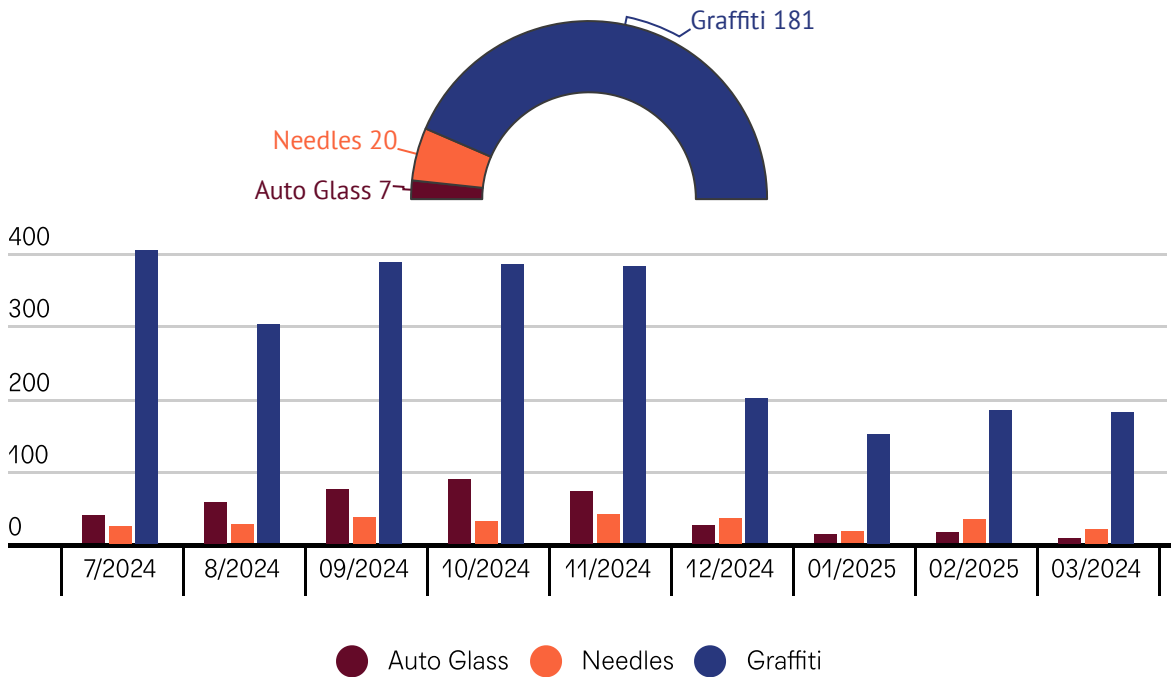
143,900
lbs.YTD

Employee Recognition



'Nacho' Average Ambassador Appreciation Day is one of our most cherished traditions, celebrating the dedication and impact of our exceptional team. This annual event highlights the invaluable contributions of the men and women who have been enhancing The East Cut community since 2016.

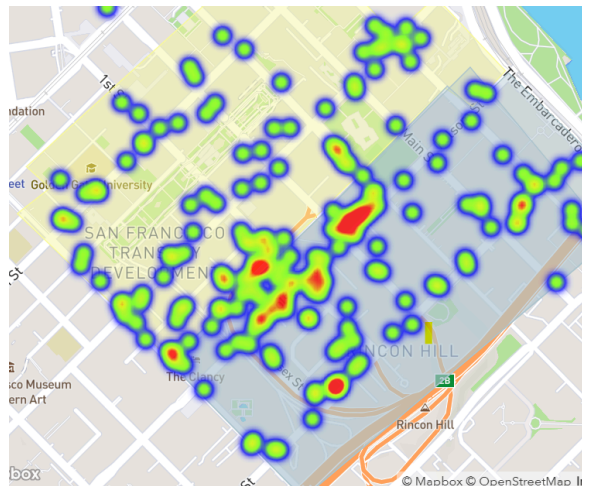
Quality of Life Cleaning



Zones Pressure Washed

1,2,3,4,5

See pressure washing map [here](#).



This map shows all of the feces removed by The East Cut services team in the past month.

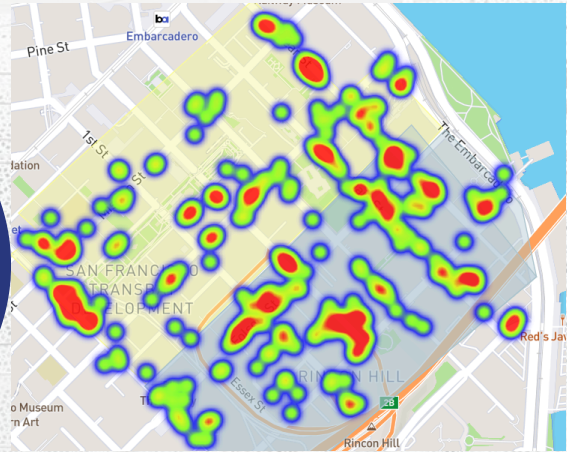
Overnight Safety



Jan 13
Calls

March
17 Calls

Feb
12 Calls



Overnight Safety Business contacts. The red marked areas on the heat map indicate that the surrounded properties are visited more frequently.

Calls for service

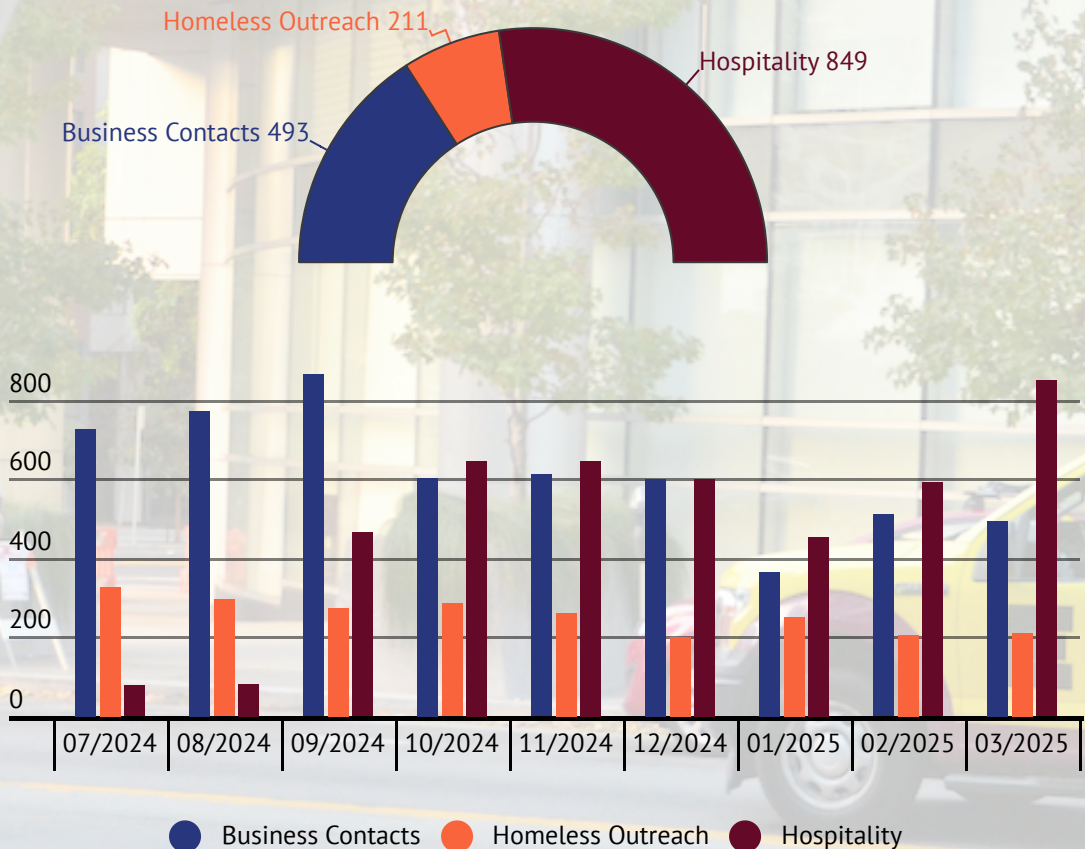


March
average
unhoused
sleepers

11

The services team responded to a disturbance on Clementina involving two individuals yelling inside a tent. The team conducted a welfare check but were unsuccessful, so SFPD was contacted. SFPD arrived at 9:05 AM, arrested the male, and allowed the female to pack up and leave after speaking with paramedics.

Hospitality



Jessica continues to make a strong impact at Salesforce Park and The Crossing. Her friendly and proactive approach has helped inform residents, workers, and visitors about neighborhood events and amenities. By providing personalized recommendations and maintaining a consistent presence, she has strengthened community connections and enhanced the visitor experience. Jessica's efforts have been key to making the district more welcoming and accessible.



Dispatch



Calls Received - 103

Text/Direct Message Received
-31

Emails Received - 28



311 Requests
to City
73

Before & After



The Beale Stairs is a location that consistently requires attention from our services team. When graffiti appears, the team responds promptly to remove or cover it, ensuring the area remains clean and well-maintained.



Certain areas in the district, like Harrison Street between Essex and 2nd, often has unexpected weed growth. Our team does an excellent job staying on top of it and ensuring these areas remain clean and tidy.

Meet The Team

CLEANING TEAM

Dwight



Robert



Jerry



Juan



Nicholas



Lorenzo



Zain



Dennis



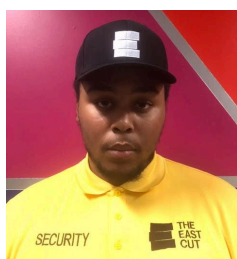
Gabriel

HOSPITALITY



SAFETY TEAM

Andrew



Masen



Reaunte



Brandon



Meet The Team

DISPATCH TEAM

Alyssa



Rene



Dawanna



TEAM LEADERS

Mario



Norman



James C ("JC")



Juan



Lorenzo



James

Operations Manager



Robert W

Operations Supervisor

