

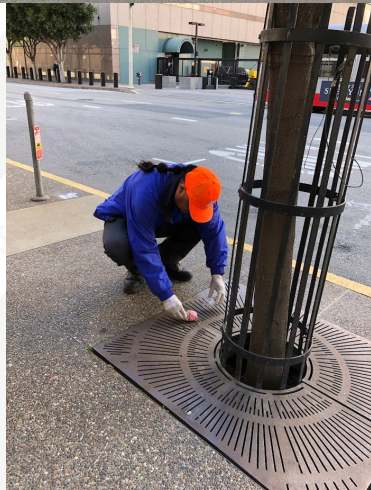
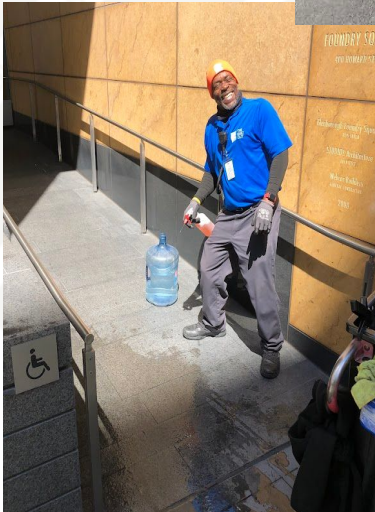
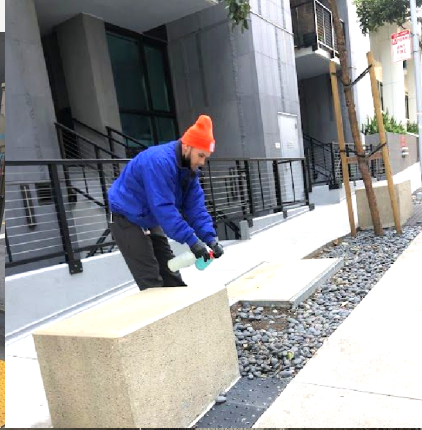
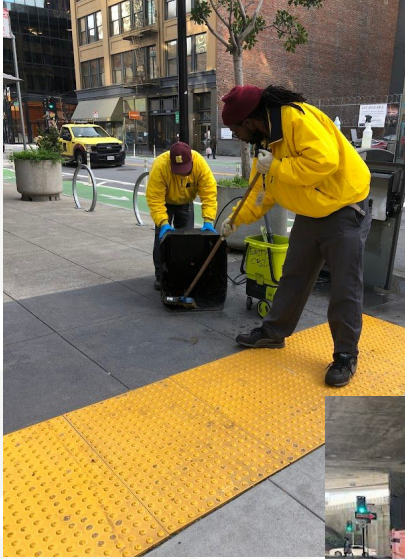
# Operations Report

## March 2023

Prepared by: Block by Block  
for The East Cut Community Benefit District



# Highlights

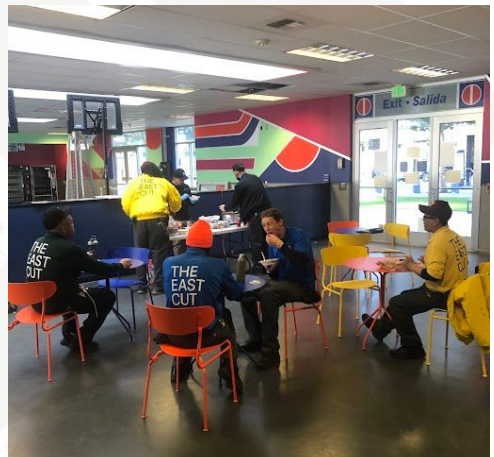


# Trash

6,550  
lbs. of trash



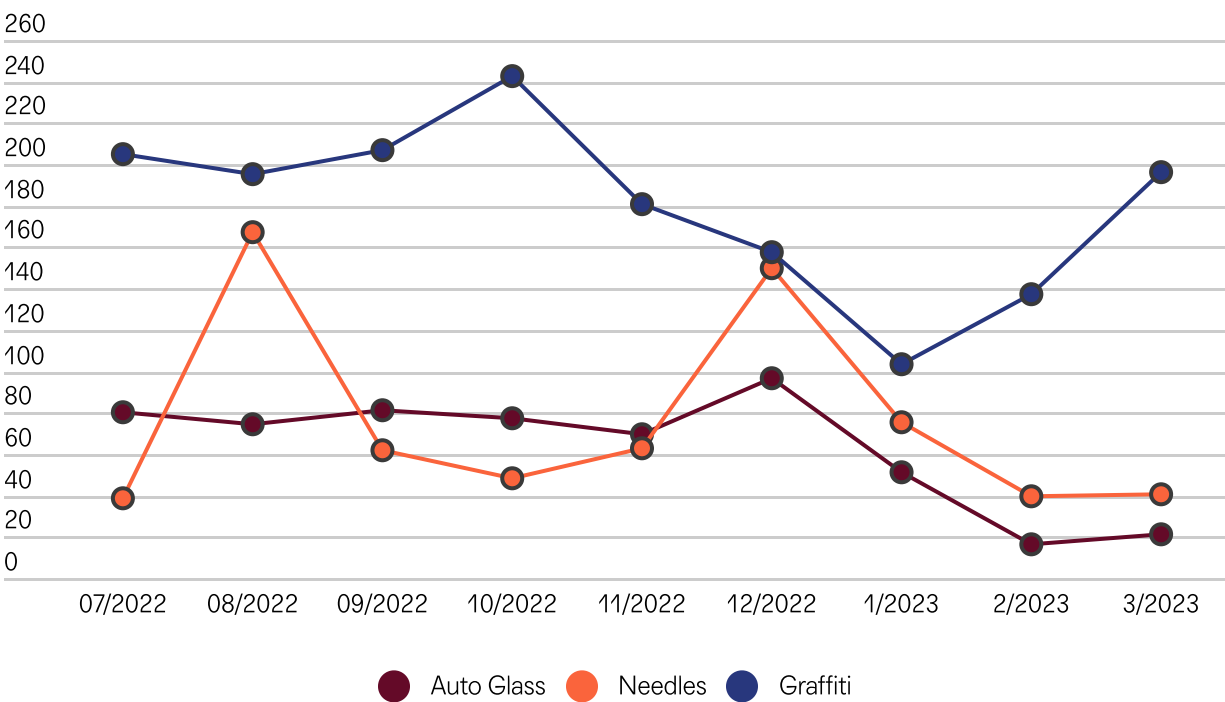
20,850  
lbs.YTD



The East Cut Services team savored some incredible nachos during their yearly celebration of Nacho Average Ambassador Appreciation Day.



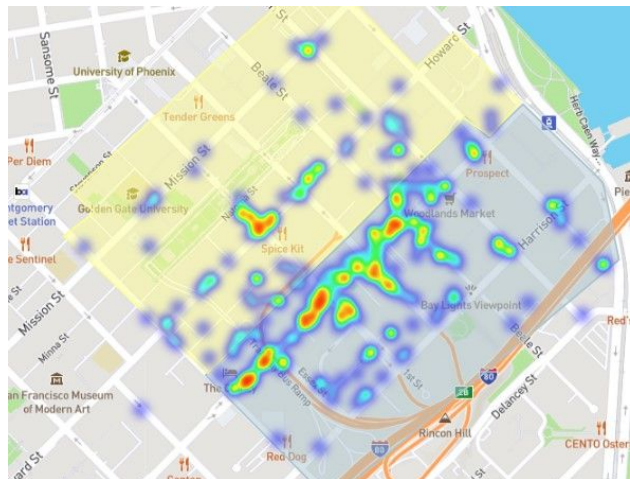
# Quality of Life Cleaning



Zones Pressure Washed

1,3,4,5

See pressure washing map [here](#).



This map shows all of the feces removed by The East Cut cleaning team. The areas in red require more clean-up.

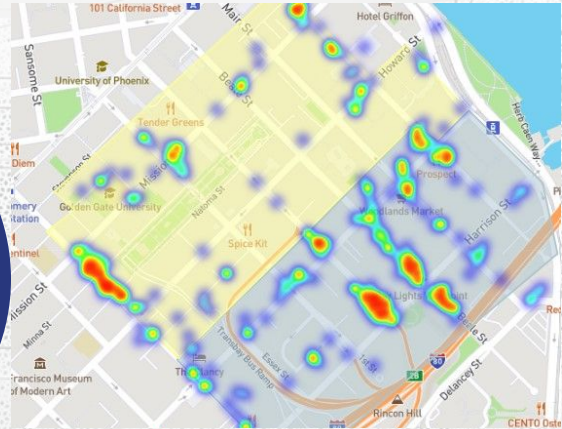
# Overnight Safety



Jan  
8 Calls

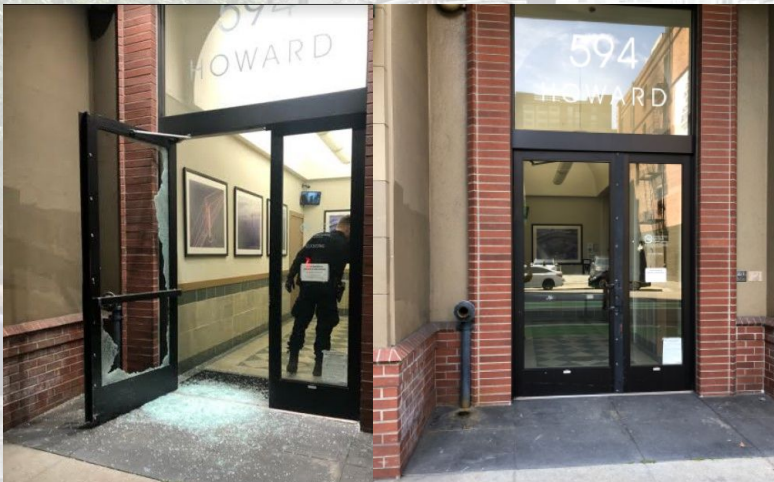
March  
5 Calls

Feb  
3 Calls



Overnight Safety Business contacts. The red marked areas on the heat map indicate that the surrounded properties are visited more frequently.

## Calls for service

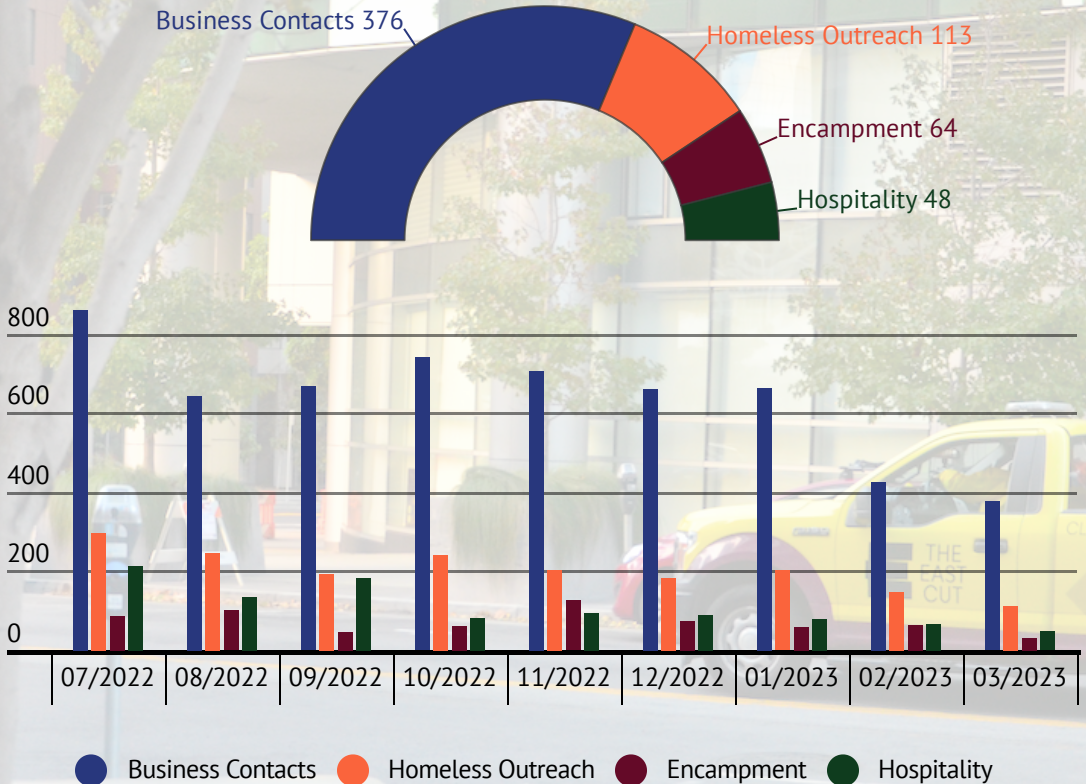


March average  
unhoused  
sleepers

20.5

The Overnight Safety Team noticed that the glass door situated at 594 Howard Street had been shattered, the Team promptly notified the San Francisco Police Department (SFPD). After the officers arrived on the scene, they did not find any indications of theft or trespassing. The glass door was repaired the following day

# Hospitality



In the district, the number of encampments has slightly decreased to an average of 14 per day. The East Cut services team has informed that most of these encampments are dismantled before the afternoon. Encampments that exist for an extended period are regularly provided welfare checks and monitored to ensure there is a clear path of travel, and individuals are continuously asked if they would like assistance seeking shelter.

The reduction in business contacts can be attributed to the overnight safety team focusing their resources on The Crossing, which limits their interactions with front desk staff during the night.



# Dispatch



Calls Received - 74

Text/Direct Message Received  
-21

Emails Received - 92

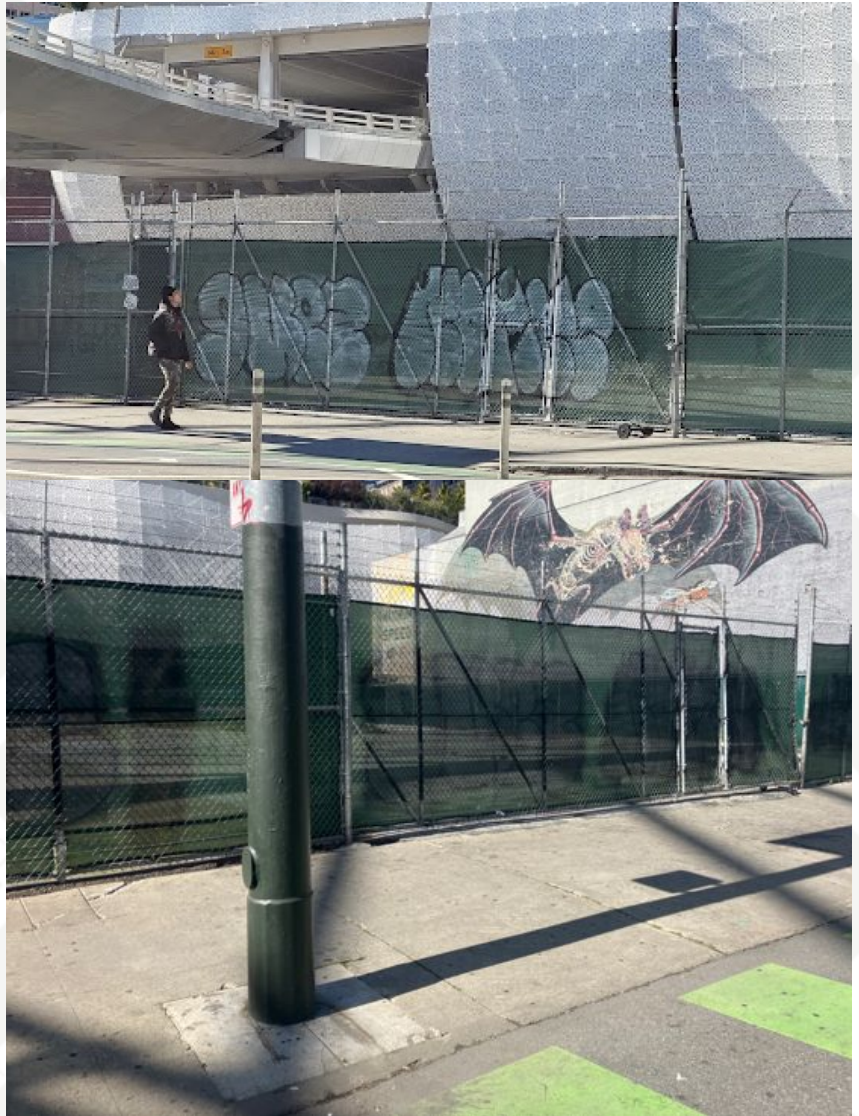


311 Requests  
from City  
**37**



311 Requests  
to City  
**101**

# Before & After



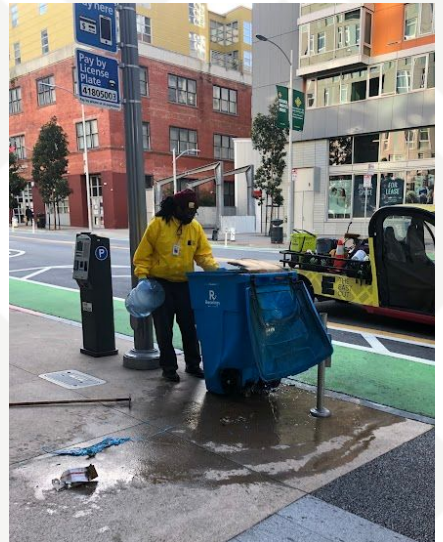
The East Cut Services team strictly prohibits graffiti within the district, regardless of whether it is on public or private property.



# Before & After



At 388 Beale St, the East Cut Services team removed a large pile of debris that was scattered on the street.



The team acted swiftly in response to a Recology totter catching on fire.